

## Planetary Gear Drives

### Highly Efficient Space-Saving Drives

Bosch Rexroth electric and planetary gear drives are efficient propulsion solutions for hydraulic and electric mobile and off-highway equipment. These planetary gear drives are available as propel, swing, or winch drives, and all drives are compact, space-saving, and easy to install. They are best suited for mobile hydrostatic applications, such as propelling drives in tracked vehicles, wheel drives in wheeled vehicles, swing drives for rotary motion, and winch drives for heavy lifting and lowering.

**rexroth**  
A Bosch Company

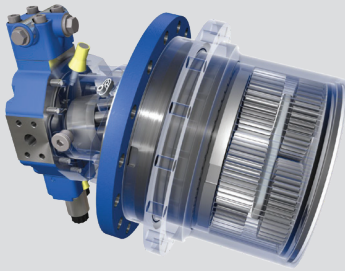


### Applications

- Agricultural Sprayers
- Airport Vehicles
- Bulldozers
- Container Cranes
- Crawler Cranes
- Drilling Rigs
- Forestry Equipment
- Municipal Vehicles
- Pavers
- Rollers
- Shipyard Cranes
- Sweepers

**Gear Up with Rexroth Planetary Gear Drives!**

**Call 248-373-1600, email [info@morrellinc.com](mailto:info@morrellinc.com), or visit [morrell-group.com/planetary-gear-drives-bosch-rexroth/](http://morrell-group.com/planetary-gear-drives-bosch-rexroth/)**



## HYDROTRAC GFT

The HYDROTRAC GFT is a compact and rugged mechanical planetary gear drive. It features two three-stage gear drives with a bent axis axial piston motor to create a compact transmission unit. A large selection of gear ratios and drive torques are available.

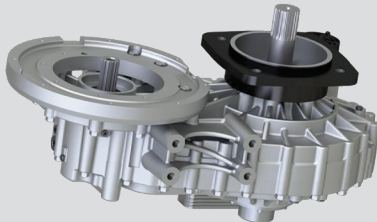
- Space-saving design with easy & fast configuration
- Mechanical disconnect for towing purposes
- Optional maintenance-free dynamic brake



## MOBILEX GFB

The MOBILEX GFB consists of two three-stage planetary gear drives with an integrated multi-disk parking brake, output pinion, and a hydraulic motor. It easily attaches to fixed and variable motors with its space-saving plug-in design, and it excels in accurate positioning.

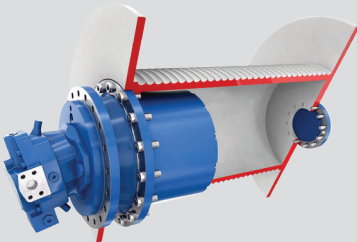
- Compact, space-saving design with easy mounting
- Low noise operation & high efficiency
- Long service life & easy oil change



## eGFZ9115 Electric Gear Drive

The planetary gear drive ROTATRAC eGFZ9115 is a compact, one-speed spur-gear electric drive that reduces exhaust and noise emissions. It has standard integrated sensor technology with optional connections for speed measurement and CAN Bus communication.

- High power density for off-highway vehicles
- Developed for high-speed electric motors
- Integrated cooling circuit for the electric drive



## MOBILEX GFW

The MOBILEX GFW is a compact planetary gear winch drive that's sensitive to moving and positioning heavy loads to maximize productivity and create a high safety level for machine operators. Some technical specs are adjustable, such as crane positioning sensitivity.

- High resistance, robustness, & durability
- Great rotational characteristics
- Easy to install & requires little maintenance

**E** Engineering  
Partner

**S** Systems  
Integrator

**V** Value-Added  
Distributor

248-373-1600 • [morrell-group.com](http://morrell-group.com) • [orders@morrellinc.com](mailto:orders@morrellinc.com)

MI (HQ) • IL • IN • IA • MN • ND • OH • ON, CAN • SD

**MorrellGroup**  
Evolution in Controls